

# FOR LEASE INDUSTRIAL SPACE



1251 Laurel Avenue | Lompoc, CA  
+/-3,880 SF

Mike Kelly  
805.928.2800 ext. 113  
Mike@PacificaCRE.com  
Lic #01800988

Pat Palangi  
805.928.2800 ext. 105  
Pat@PacificaCRE.com  
Lic #01108680

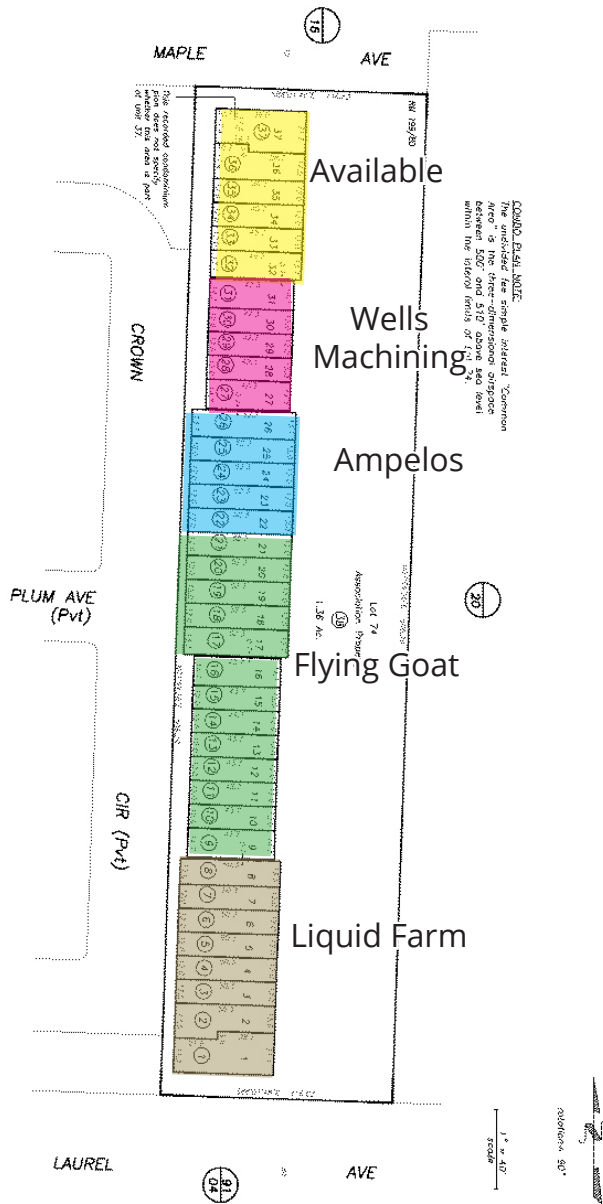
Jerry Schmidt  
805.928.2800 ext. 107  
Jerry@PacificaCRE.com  
Lic #00956042



2520 Professional Parkway | Santa Maria, CA 93455 | [PacificaCommercialRealty.com](http://PacificaCommercialRealty.com)

Information contained herein has been obtained from the owner of the property or from other sources deemed reliable. We have no reason to doubt its accuracy, but we do not guarantee it.

# FOR LEASE 1251 W. Laurel Avenue, Lompoc, CA



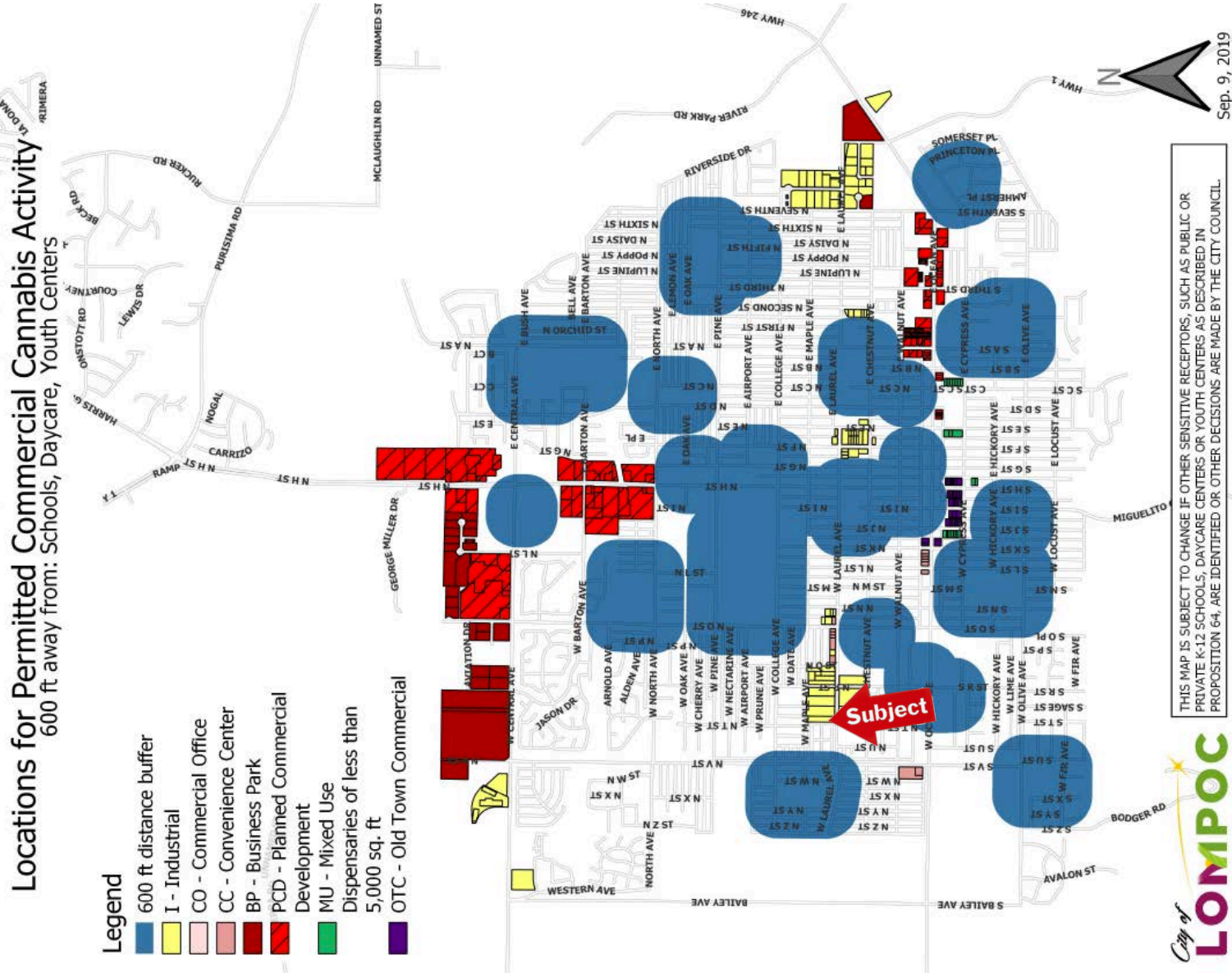
## Lease & Property Details

- Available Space: Units 32-37
- Size: 3,880 SF
- Lease Rate: \$2.00/SF, NNN
- Lease Term: Negotiable

## Property Details

- Recently constructed multi-tenant industrial condominium building
- High quality concrete block construction
- 21' ceilings
- Fire sprinklers
- Contact City of Lompoc regarding cannabis-related uses

# FOR LEASE 1251 W. Laurel Avenue, Lompoc, CA



2520 Professional Parkway | Santa Maria, CA 93455 | [PacificaCommercialRealty.com](http://PacificaCommercialRealty.com)

Information contained herein has been obtained from the owner of the property or from other sources deemed reliable. We have no reason to doubt its accuracy, but we do not guarantee it.