

FOR LEASE COMMERCIAL LAND



Property Information	
Lease Price	\$6,100/Mo., NNN
Land Size	±2.09 acres
APN	115-010-016
Zoning	GC (General Commercial)
Available	Now

- Zoning allows several retail and commercial uses including hotels, restaurants and grocery stores, auto parts
- Great development opportunity for an underseved community
- 800 homes and 100 apartments under construction nearby

500 Block of Guadalupe Street | Guadalupe, CA

- Great Location on historic Highway 1
- Approximately 500 feet of frontage
- Property is right in the center of the commercial corridor

Jerry Schmidt
805.928.2800 ext. 107
Jerry@PacificaCRE.com
Lic #00956042

Chris Garner
805.928.2800 ext. 104
CGarner@PacificaCRE.com
Lic #01010310



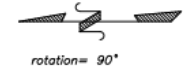
2520 Professional Parkway | Santa Maria, CA 93455 | PacificaCommercialRealty.net

Information contained herein has been obtained from the owner of the property or from other sources deemed reliable. We have no reason to doubt its accuracy, but we do not guarantee it.

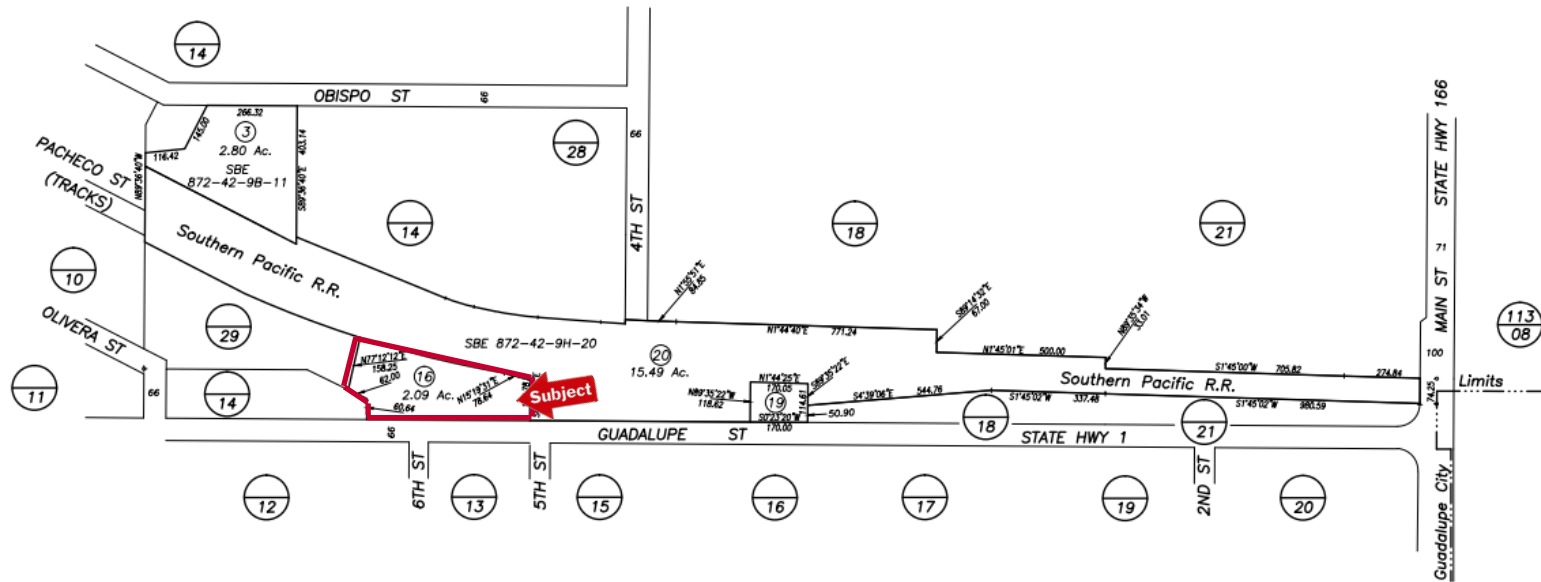
FOR LEASE 500 Block of Guadalupe Street, Guadalupe, CA

POR. RANCHO GUADALUPE

115-01



1" = 300'
scale



NOTICE
Assessor Parcels are for tax assessment purposes only and do not indicate either parcel legality or a valid building site.

City of Guadalupe
Assessor's Map Bk, 115 -Pg, 01
County of Santa Barbara, Calif.

LD/10 15 into new pg. 290-01 thru 74

Jerry Schmidt
805.928.2800 ext. 107
Jerry@PacificaCRE.com
Lic #00956042

Chris Garner
805.928.2800 ext. 104
CGarner@PacificaCRE.com
Lic #01010310

2520 Professional Parkway | Santa Maria, CA 93455 | PacificaCommercialRealty.net

Information contained herein has been obtained from the owner of the property or from other sources deemed reliable. We have no reason to doubt its accuracy, but we do not guarantee it.

